

SPECIFICATION

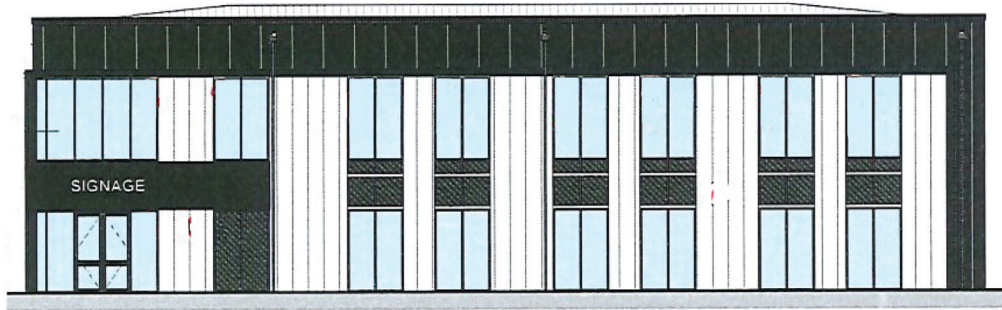
UNIT 1 | ZONE 1



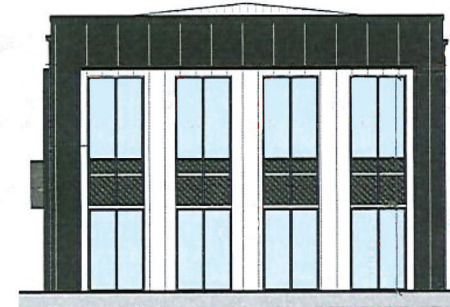
**STADIUM
POINT**

BUSINESS PARK

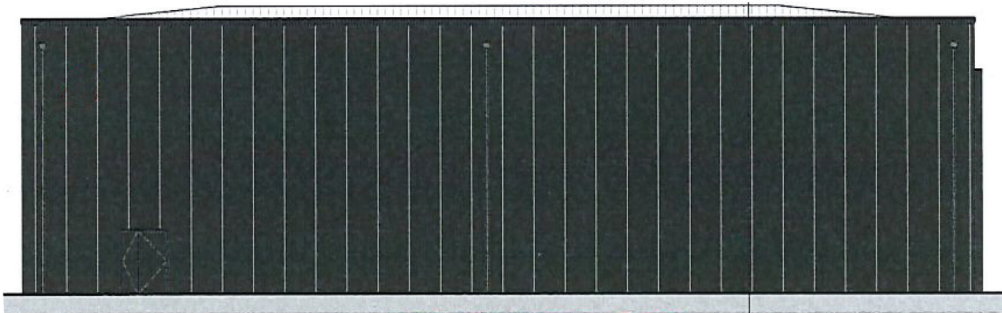
www.stadiumpoint.co.uk



PROPOSED EAST ELEVATION



PROPOSED NORTH ELEVATION



PROPOSED WEST ELEVATION



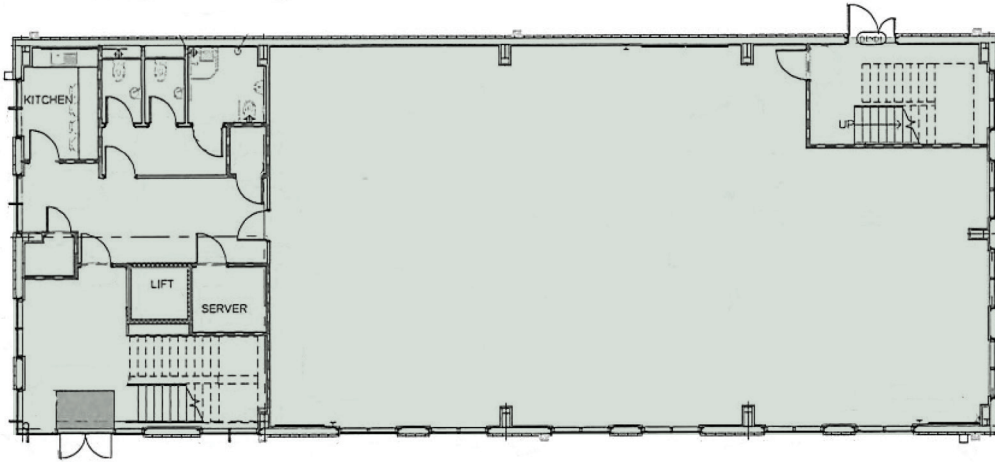
PROPOSED SOUTH ELEVATION



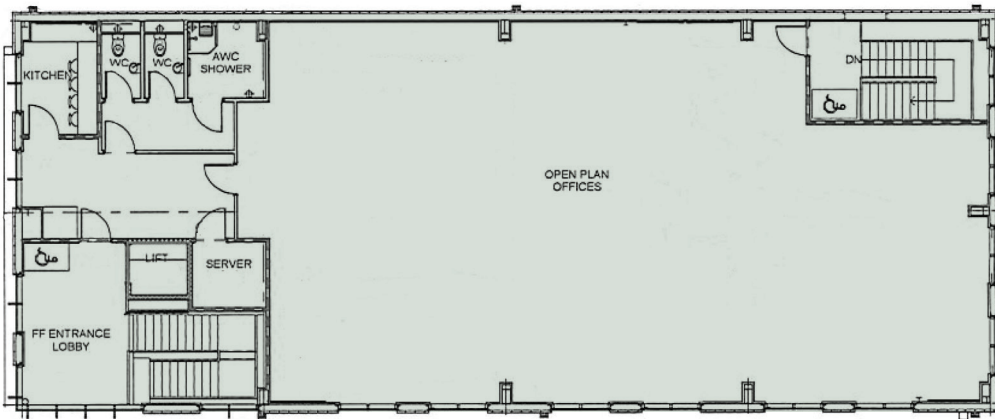
A DEVELOPMENT BY

MORRIS
PROPERTY

INTERNAL LAYOUT PLAN - UNIT 1



GROUND FLOOR



FIRST FLOOR

BREAKING DOWN THE DETAIL



Car Parking
25 spaces



EV Parking
2 spaces
included



Open Plan
Flexibility



Shower - ground
and first floor



Access flooring
throughout



PV Ready
Roof



CCTV



Maintained
Landscaping

OFFICE ACCOMMODATION

GROUND FLOOR	3,875ft ²	360m ²
FIRST FLOOR	3,875ft ²	360m ²
TOTAL	7,750ft ²	720m ²

TSR

TOWLER SHAW ROBERTS

For further information
or to arrange a site inspection
please contact:

Toby Shaw
DDI: 01743 260880
Mobile: 07967721745
Email: toby.shaw@tsrsurveyors.co.uk